

# PARTY

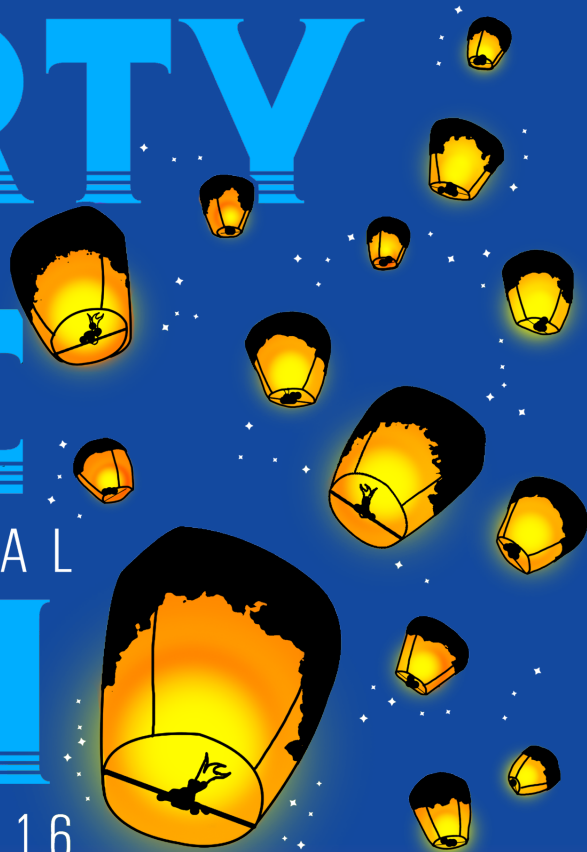
REGION 1

# LITE

31ST ANNUAL

# JAM

JUNE 10-12, 2016



## FULTON COUNTY ABATE

**June 10th, 2016 - Region 1 A.B.A.T.E. Fulton County**

**PARTY LOCATED 681 S. 900 E, AKRON, IN:** Between Rochester & Akron, just off State Road 14 (turn N. on to Co. Rd. 900 E., then 1/4 mile on the East side of road).

**GATES OPEN:** 10am Friday June 10th and close at Noon on Sunday. Early set-ups available Thurs 4-7pm only for extra \$10 per unit. NO set-ups prior to 4pm on Thursday.

**ADMISSION:** ABATE MEMBERS - \$15 per person, Non-members - \$20 per person. MINIMUM AGE 18; If you're under 21 you MUST be an ABATE member with I.D.

**CAMPING & PARKING:** Free tent camping & bike parking. RV, campers, bus, bobtail (all primitive) parking \$25 per unit. Car, truck parking at campsite \$10 each. \*Special permit for golf cart/ATV for disabled on individual basis; contact us BEFORE the event to request. Holly 574.933.3478.

Vendors contact Holly 574.933.3478 or Becky 574.229.7266

**OPEN TO THE PUBLIC - EVERYONE WELCOME**

**NO PETS ALLOWED | NO GLASS BOTTLES | NO WEAPONS | NO ATTITUDES  
AN ABATE FOUNDATION EVENT**

**LIVE MUSIC  
FRIDAY WITH  
"THE  
EEL RIVER  
BAND"**

**LIVE MUSIC  
SATURDAY WITH  
"LATER THE  
NEVER"**

**FIELD EVENTS  
AT 1PM  
SATURDAY**

**NEW THIS YEAR  
STUPID HUMAN  
FIELD EVENTS!**

**BONFIRE  
SATURDAY NIGHT  
PLUS MUCH,  
MUCH, MORE!**

